

9

**WATFORD
GRAMMAR
SCHOOL**

**CASE
STUDY**



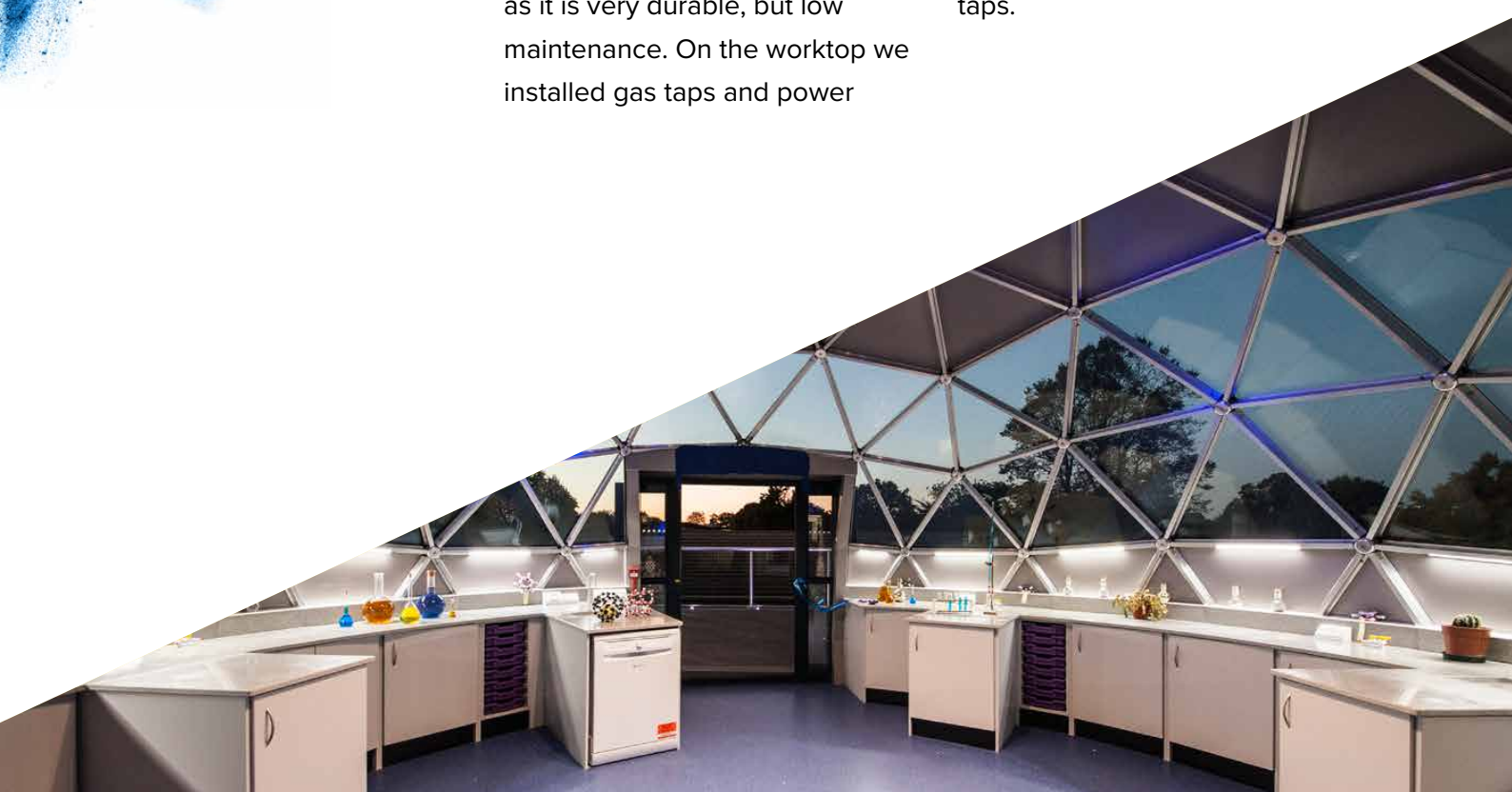
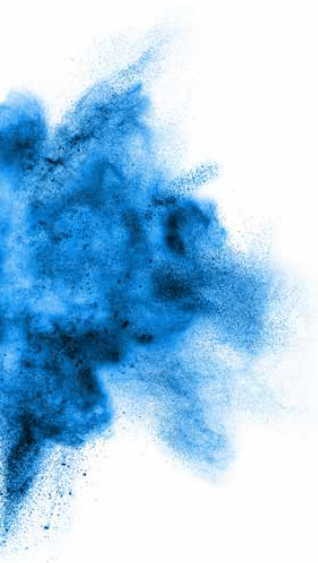


WATFORD GRAMMAR SCHOOL

Watford Grammar School for Girls approached Pinnacle with the task of supplying and installing fitted storage for their striking new science laboratory in a newly built, rooftop-situated geodesic dome. The school believed it would “bring science alive” for the students.

A neutral and clean colour scheme of pale grey was chosen which complemented the pale panel colours on the outside of the solar dome. The worktop chosen was a composite stone in Silver Dust, a light grey with dark flecks. Composite stone is an ideal choice for science labs and other school environments as it is very durable, but low maintenance. On the worktop we installed gas taps and power

sockets along with white epoxy resin sinks. Epoxy resin is often used in laboratories as a sink material as it is very resistant to high heat, which means hot objects used in an experiment can be placed straight in the sink without causing any damage. We also installed vandal resistant hot and cold laboratory taps.





The capacity storage was chosen in a colour called Twilight, very similar to the colour of the worktops. Standard cupboards were interspersed with tray storage units with purple and blue trays, which coordinated with the vinyl flooring and overhead blue lights.

Finally, we supplied Form Stools which are popular because of their robust design and 25 year guarantee.

The dome was opened in a ceremony conducted by Lord Robert Winston (Britain's best-known reproductive health expert).



SPECIFICATION

- Supply and install laboratory furniture for geodesic dome

LOCATION

- Watford, Hertfordshire

SCOPE OF WORKS

- Fitted capacity storage
- Composite stone worktop
- Gas taps, water taps and power sockets
- Forms tools

**WATFORD
GRAMMAR
SCHOOL**